

Precision Spray For Maximum Efficiency

When a continuous coating of fluid is needed on a smooth surface, Uni-Roller® applicators excel. However, when the surface isn't smooth or intermittent coverage is required, the Unist Low Volume Spray Nozzle is the answer. The Low Volume Spray Nozzle, when paired with the SmartFlow™ programmable fluid controller, delivers a consistent and controlled spray coating to any surface.

- Valve at nozzle tip eliminates messy drips
- Immediate on/off spray control
- Fine control of spray pattern



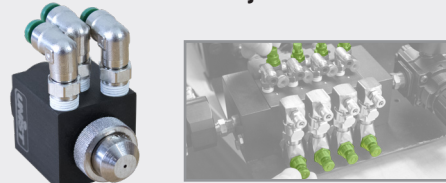
The Low Volume Spray Nozzle operates using a compressed air signal to control an internal valve at the nozzle tip. This allows crisp on/off control, eliminating lag and preventing messy fluid drips. The spray coverage can be finely tuned using precision needle valves that independently control the liquid and air output. These needle valves can be located on the spray nozzle, or at the SmartFlow™ controller, providing the option of adjusting the spray mix at the point of application or keeping all the controls in a central location.

Standard adjustment



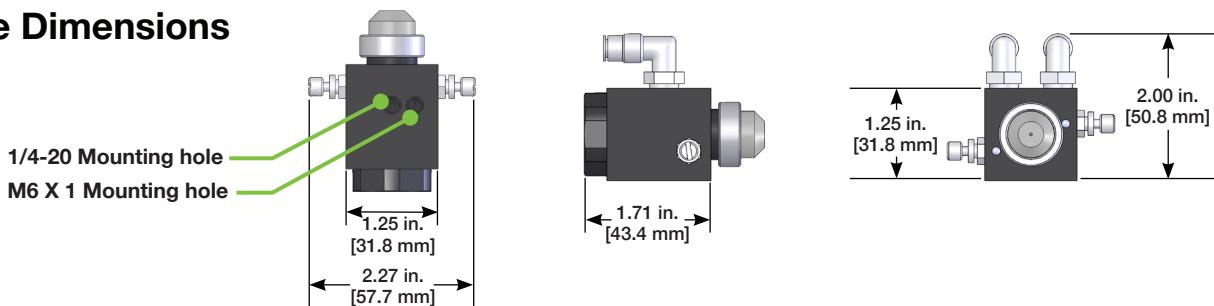
Adjust the fluid and air right at the nozzle.

Remote adjustment



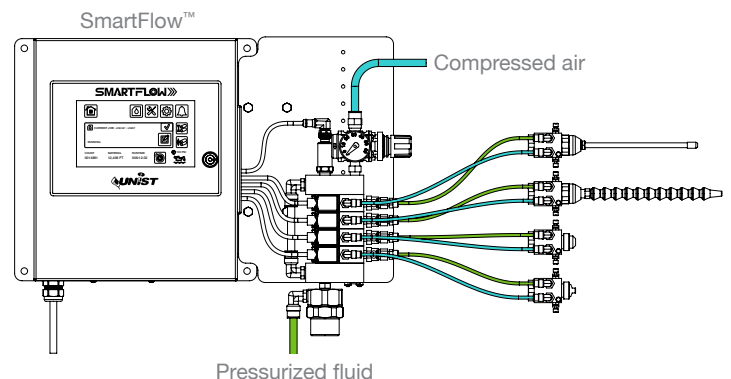
Adjust the fluid and air at the remote adjustment solenoid valve bank on the SmartFlow™ programmable fluid controller.

Nozzle Dimensions



System Example

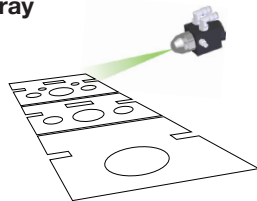
The Low Volume Spray Nozzles connect directly to the outputs on the SmartFlow™. Up to 22 Low Volume Spray Nozzles can be independently controlled, or they can be used in combination with a Uni-Roller® S2 applicator, giving maximum flexibility in coverage and control.



Spray Patterns

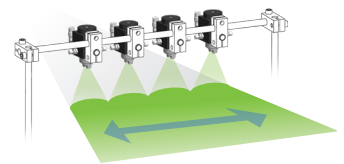
Conical spray

The conical spray tip produces a round pattern that varies in size based on the distance of the nozzle from the surface.

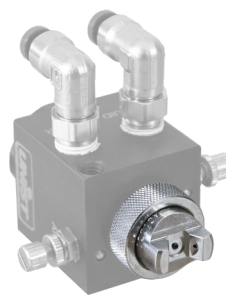


Fan spray

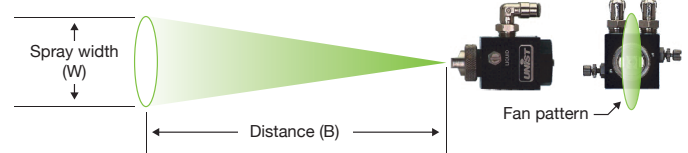
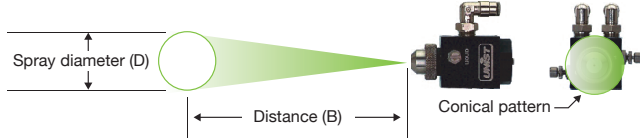
The fan spray tip produces a flat spray pattern that varies in size based on the distance of the nozzle from the surface.



Approximate spray dimensions	
B	D*
3" [76 mm]	1.25" [32 mm]
6" [152 mm]	2.25" [57 mm]
12" [305 mm]	3.50" [89 mm]
18" [457 mm]	4.25" [108 mm]
24" [610 mm]	5.50" [140 mm]
30" [762 mm]	6.75" [172 mm]



Approximate spray dimensions	
B	W*
3" [76 mm]	7.5" [191 mm]
6" [152 mm]	12" [305 mm]
9" [229 mm]	15" [381 mm]
12" [305 mm]	18" [457 mm]
15" [381 mm]	23" [584 mm]
18" [457 mm]	26" [660 mm]



* Data approximates spray pattern for the Low Volume Spray Nozzles. Please note that these values are a guideline for initial nozzle setup. Actual spray pattern will vary depending on the applied fluid, air and fluid pressures, and metering screw settings.

Options



Articulating arm



Adjustable magnet mount



Modular mounting system

Create your own mounting solution with our modular mounting system.



Nozzle stud



Mounting rod
Cut to size from 6-48"
[152.4-1219.2 mm]
Lengths in 6" [152.4 mm]
increments

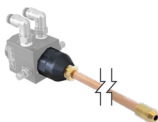


Bar clamp



Square base plate

Extended nozzle options allow the Low Volume Spray Nozzle to reach tight areas that otherwise might be difficult to access.



Semi-rigid copper



Loc-Line®

The In-Die Quick Connect allows Unist spray nozzles to be permanently mounted to the die, ensuring they remain in position with each die change. Each quick connect is keyed to assure operators reattach the lines correctly. Integral check valves prevent dripping. This is an ideal solution when die-mounted nozzles are necessary.



NEED MORE
INFORMATION?

800.253.5462
salessupport@unist.com



Unist, Inc.
4134 36th Street SE
Grand Rapids, MI 49512 USA
U.S. & Canada: 800.253.5462
International: 616.949.0853
Email: salessupport@unist.com